

INEEDROBOT LANDSCAPING PRODUCT CATALOGUE

iNeedRobot

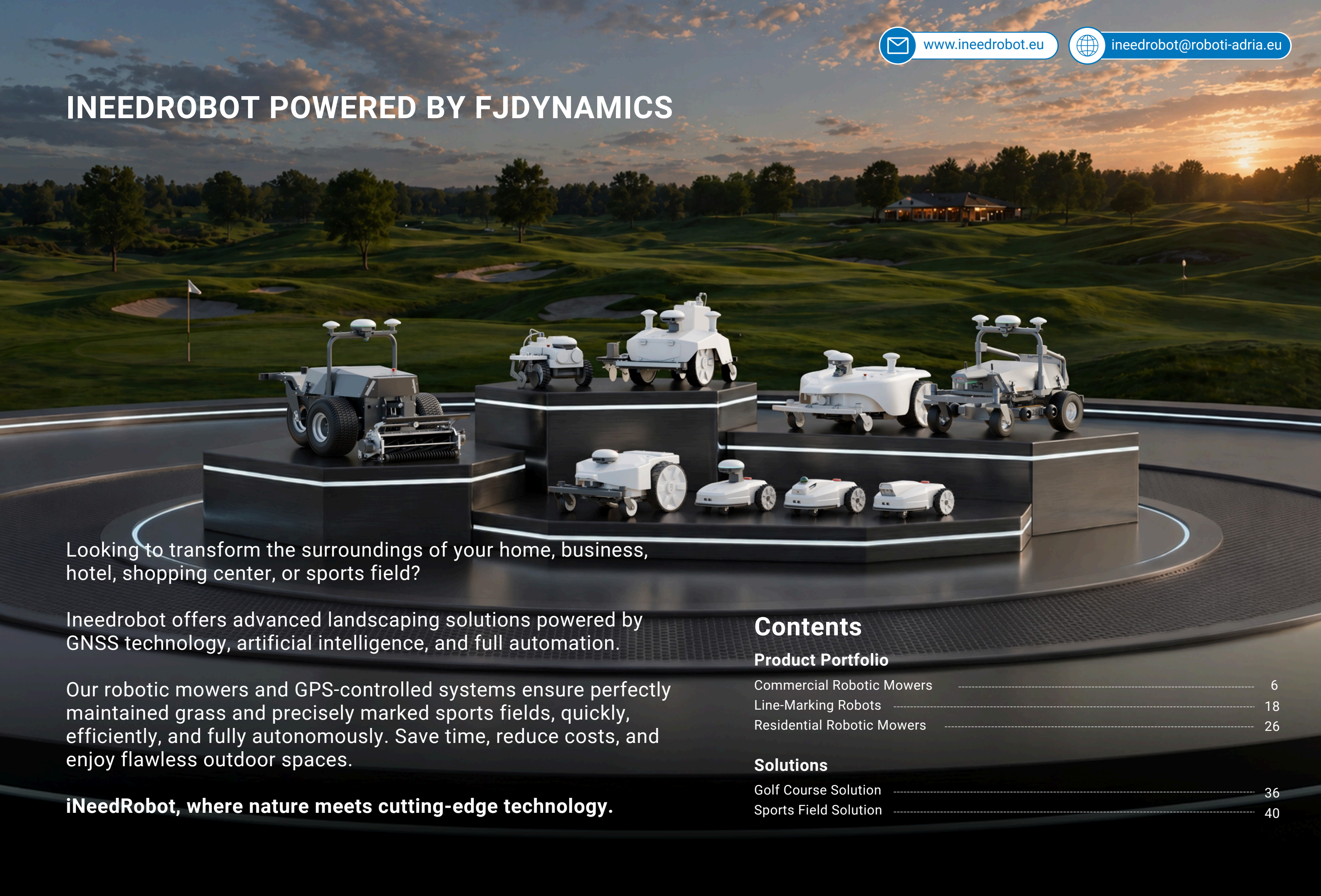


www.ineedrobot.eu



ineedrobot@roboti-adria.eu

INEEDROBOT POWERED BY FJDYNAMICS



Looking to transform the surroundings of your home, business, hotel, shopping center, or sports field?

Ineedrobot offers advanced landscaping solutions powered by GNSS technology, artificial intelligence, and full automation.

Our robotic mowers and GPS-controlled systems ensure perfectly maintained grass and precisely marked sports fields, quickly, efficiently, and fully autonomously. Save time, reduce costs, and enjoy flawless outdoor spaces.

iNeedRobot, where nature meets cutting-edge technology.

Contents

Product Portfolio

| | |
|----------------------------|----|
| Commercial Robotic Mowers | 6 |
| Line-Marking Robots | 18 |
| Residential Robotic Mowers | 26 |

Solutions

| | |
|-----------------------|----|
| Golf Course Solution | 36 |
| Sports Field Solution | 40 |



Commercial Robotic Mowers



RCM01



RM21



Titan



FRX



www.ineedrobot.eu



ineedrobot@roboti-adria.eu

RCM01

Robotic Cylinder Mower

Perfection on Every Blade. Autonomy in Every Corner.

Precision Cutting

Achieve clean, scissor-like cuts with a reel cutting system, minimizing leaf tearing and promoting healthier turf growth.

Dynamic Terrain Adaptability

The floating cutting unit automatically follows turf contours, helping maintain a consistent cut and prevent turf scalping.

Professional-Grade Striping

Creates clean, high-contrast stripes using precision rollers, with adjustable striping widths to match your course presentation.

Do More with Less

One operator can manage multiple mowers remotely, allowing teams to focus on higher-value work.

Reduce Labor Costs

by up to **90%**

Reduce Energy Costs

by up to **80%**



Specifications

| | |
|-----------------------------|--|
| Dimensions | 1905 × 1077 × 1077 mm (75 × 42.4 × 42.4 in.) |
| Weight | 365 kg (804.7 lb) |
| Max Mowing Area per Charge | 20,000 m ² (5 acres) |
| Max Mowing Area in 24 Hours | 30,000 m ² (7.4 acres) |
| Max Mowing Area in 72 Hours | 90,000 m ² (22.2 acres) |
| Cutting Height | 7–44 mm (0.28–1.73 in.) |
| Cutting Width | 685 mm (27 in.) |
| Battery Capacity | 8 kWh |
| Runtime per Charge | 10 h |
| Charging Time | 5 h |
| Max Working Slope | 15° |
| Sensors | RTK, LiDAR, Vision |
| IP Rating | IPX4 |



RM21

Multi-Functional Robotic Mower

All-in-One Solution for a New Era of Turf Care.

One Machine, Multiple Applications

Quickly switch between kits to handle mowing, line marking, grass collecting, ball picking, and dew brushing with one machine.

Reliable Operation in Weak-Signal Areas

RTK and LiDAR work together to support reliable operation under trees and in other weak-signal areas.

Multi-Zone Management

Assign one task across multiple zones, making it easier to manage large golf courses and sports facilities.

Intelligent Path Planning

Plan optimal routes automatically within a defined work area, ensuring consistent turf maintenance.



Specifications

| | |
|-----------------------------|---|
| Dimensions | 1330 × 853 × 980 mm (52.4 × 33.6 × 38.6 in.) |
| Weight | 170 kg (375 lb) |
| Max Mowing Area per Charge | 12,000 m ² (3 acres) |
| Max Mowing Area in 24 Hours | Fast charging mode: 36,000 m ² (8.9 acres) Standard charging mode: 31,200 m ² (7.7 acres) |
| Max Mowing Area in 72 Hours | Fast charging mode: 108,000 m ² (26.7 acres) Standard charging mode: 93,600 m ² (23.1 acres) |
| Cutting Height | 20–127 mm (0.8–5 in.) |
| Cutting Width | 635 mm (25 in.) |
| Battery Capacity | 4 kWh |
| Runtime per Charge | 5 h |
| Charging Time | Standard 5 h / Fast charging 3 h |
| Max Working Slope | 15° |
| Sensors | RTK, LiDAR, Vision |
| IP Rating | IPX4 |



RM21 + LM01 Line Marker Kit

- One-Tap Autonomous Operation
- Resume Line Marking Seamlessly
- Lower Input. Higher Field Output.
 - Reduce paint usage by 50%
 - Cut labor costs by up to 90%
 - Mark up to 20 full-size fields per charge



RM21 + BP01 Ball Picker Kit

- Full-Basket Detection & Auto-Return
- Cloud Scheduling for Full-Course Coverage
- Cut Manual Work Across the Range



RM21 + GC01 Grass Collector Kit

- Automated Grass Collection & Disposal
- Debris Collection on Artificial Turf
- Course-Grade Turf Striping



RM21 + DB01 Dew Brush Kit

- Automatic Lifting & Folding
- Customizable Brushing Direction
- Dew Brushing for Consistent Ball Roll



Specifications

LM01

| | |
|-----------------------------|---|
| Weight | 68 kg (150 lb) |
| Dimensions | 684 × 562 × 432 mm (27 × 22.1 × 17 in.) |
| Max Marking Speed | 3 km/h (1.9 mph) |
| Paint Tank Capacity | 25 L (5.5 gal) |
| Line Width Range | 50–170 mm (2–6.7 in.) |
| Nozzle Height | 30–80 mm (1.2–3.1 in.) |
| Max Marking Time per Charge | 20 h |
| IP Rating | IPX4 |
| Operating Temperature | 5–35 °C |

BP01

| | |
|---------------------|---|
| Weight | 70 kg (154 lb) |
| Dimensions | 1480 × 1120 × 590 mm (58.3 × 44.1 × 23.2 in.) |
| Picking Width | 900 mm (35.4 in.) |
| Number of Baskets | 2 |
| Capacity per Basket | 400 golf balls |

GC01

| | |
|-------------------------|--|
| Weight | 100 kg (220 lb) |
| Dimensions | 1260 × 960 × 740 mm (49.6 × 37.8 × 29.1 in.) |
| Collection Height Range | 20–50 mm (0.8–2 in.) |
| Collection Width | 800 mm (31.5 in.) |
| Max Travel Speed | 3 km/h (1.9 mph) |
| Max Collection Volume | 150 L (33 gal) |
| Max Climbing Ability | 8° |
| IP Rating | IPX4 |
| Operating Temperature | 0–45 °C |

DB01

| | |
|-------------------------|---------------------|
| Weight | 28 kg (61.7 lb) |
| Length — Single Section | 1000 mm / 39.4 in. |
| Length — Three Sections | 2930 mm / 115.4 in. |
| Brush Lift | Supported |
| Brush Folding | Supported |



Titan

Robotic Mower

Elite 2-in-1 Turf Care. Without the Elite Price.

Triple-Sensor Guidance System

Dual-antenna RTK GNSS, LiDAR, and Vision work together for stable positioning and obstacle avoidance.

Wide-Cut Productivity

The 730 mm (28.74 in.) cutting width supports high mowing output, covering 36,000 m² / 9 acres per day.

Adjustable Cutting Height

Adjust cutting height from 10–100 mm (0.4–4 in.) via the app to match turf type and season.

Titan + Line Marker Kit

Paired with the line marker kit, the Titan delivers exceptional line-marking precision and efficiency.

- Reduce paint usage by **50%+**
- Cut labor costs by up to **90%**
- Mark up to **10** standard soccer fields per charge



Specifications

| | |
|-----------------------------|---|
| Dimensions | 1400 × 1050 × 650 mm (55.1 × 41.3 × 25.6 in.) |
| Weight | 122 kg (287 lb) |
| Max Mowing Area per Charge | 18,000 m ² (4.4 acres) |
| Max Mowing Area in 24 Hours | 36,000 m ² (9 acres) |
| Max Mowing Area in 72 Hours | 108,000 m ² (26.7 acres) |
| Cutting Height | 10–100 mm (0.4–4 in.) |
| Cutting Width | 730 mm (28.74 in.) |
| Battery Capacity | 2 kWh |
| Runtime per Charge | 8 h |
| Charging Time | 2 h |
| Max Working Slope | 25° |
| Sensors | RTK, LiDAR, Vision |
| IP Rating | IP64 |

FRX

Robotic Mower

Professional Turf Management Made Affordable.

Conquer 30° Slopes with Ease

With a high-performance motor and compact chassis, FRX supports stable mowing on slopes up to 30°.

10–100 mm Adjustable Cutting Height

Adjust the cutting height from 10–100 mm / 0.4–4 in. to suit roughs, sports fields, and seasonal turf conditions.

Flexible Charging Options

Fast battery swapping for 24/7 mowing. Auto-charging for fully unmanned operation.

Multi-Field Management

FRX can manage mowing tasks across multiple sports fields and move between assigned areas after each task is completed.



Specifications

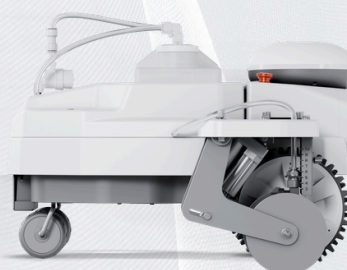
| | |
|-----------------------------|--|
| Dimensions | 1278 × 782 × 740 mm (50.3 × 30.8 × 29.1 in.) |
| Weight | 83.7 kg (184.53 lb) |
| Max Mowing Area per Charge | 8,000 m ² (2 acres) |
| Max Mowing Area in 24 Hours | 32,000 m ² (8 acres) |
| Max Mowing Area in 72 Hours | 96,000 m ² (23.7 acres) |
| Cutting Height | 10–100 mm (0.4–4 in.) |
| Cutting Width | 520 mm (20.5 in.) |
| Battery Capacity | 1 kWh |
| Runtime per Charge | 320 min |
| Charging Time | 240 min |
| Max Working Slope | 30° |
| Sensors | RTK, Vision |
| IP Rating | IPX5 |



Robotic Line Markers



PaintMaster Pro



PaintMaster Mini



PaintMaster Ultra

PaintMaster Pro

Make Line Marking Easier

Factory-calibrated before delivery, so the machine is ready to start marking after arrival.

1 kWh battery supports extended runtime for frequent line-marking operations.



20 L standard paint tank, expandable to 25 L for continuous marking across multiple fields.

Standard studded tires help maintain traction on turf.



Real-Time Obstacle Detection & Avoidance | Fleet and Multi-Field Management

PaintMaster Mini

Built Light. Marks Right.

The lightweight body makes transport and field-to-field movement easier.

The quick-swap battery design minimizes downtime between tasks.



8 L paint tank balances marking efficiency with portability.





PaintMaster Pro

PaintMaster Mini

Dimensions

1074 x 1023 x 672 mm (42.3 x 40.3 x 26.5 in.)

656 x 655 x 453 mm (25.8 x 25.8 x 17.83 in.)

Weight

73.4 kg (161.8 lb)

21.85 kg (48.2 lb)

Paint Tank Capacity

20 L (5.3 gal), expandable to 25 L (6.6 gal)

8 L (2.1 gal)

Marking Speed

3 km/h (1.9 mph)

2 km/h (1.2 mph)

Line Width Range

6–17 cm (2.4–6.7 in.)

5–12 cm (2–4.7 in.)

Nozzle Height

3–11 cm (1.2–4.3 in.)

3–8 cm (1.2–3.1 in.)



PaintMaster Ultra

Precision Anywhere. Perfection Everywhere.

Greater Adaptability in Complex Environments

Maintains reliable line marking across the entire field, even near buildings, grandstands, and other challenging structures.

Millimeter-Level Precision

Designed for elite venues and professional-grade pitches, delivering the precision required for high-level competition.

Engineered for Professional Excellence

Designed to meet professional line-marking standards for major stadiums, sports venues, and training facilities.

Specifications

| | |
|-------------------------|---|
| Dimensions | 1074 × 1023 × 672 mm (42.3 × 40.3 × 26.5 in.) |
| Weight | 75 kg (165.3 lb) |
| Line Width Range | 6–17 cm (2.4–6.7 in.) |
| Line Marking Speed | 1–3 km/h (0.6–1.9 mph) |
| Nozzle Ground Clearance | 3–8 cm (1.2–3.1 in.) |
| Paint Tank Capacity | 25 L (6.6 gal) |
| Battery Capacity | 1 kWh |
| Runtime | 8 h |
| Charging Time | 5 h |
| Positioning | Total Station + GNSS |
| IP Rating | IPX3 |





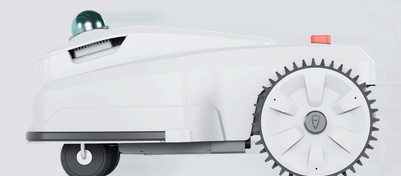
Residential Robotic Mowers



FR4000



FV2000



FL3000



FR4000 & FV2000

FR4000 Robotic Mower

For large estates, courtyards, and municipal green spaces

FV2000 Robotic Mower

For small to medium courtyards

Quick Setup

No boundary wires or complicated installation. Simply unbox, complete the setup, and start mowing quickly.

Drop & Run

Create work zones flexibly without being limited by charging-station placement. For separated lawn areas, place the mower in the target area and start the mowing task.

Real-Time Object Detection & Avoidance

With vision perception and multi-sensor detection, the mower can detect people, pets, obstacles, and small animals such as hedgehogs in real time, then adjust its route for a safer, more lawn-friendly mowing experience.

Tackles Inclines up to 33° (65%)

Conquer steep slopes with an impressive 33° climbing ability.

Smart Path Planning

Automatically executes efficient routes to keep your lawn perfectly maintained.





www.ineedrobot.eu



ineedrobot@roboti-adria.eu

FL3000

LiDAR-Powered Robotic Mower

For yards with dense trees, walls, tight corners, and weak GPS signals

No Wire. No RTK. 10-Minute Setup

Forget about the hassle of complex setup—simply install the charging station and define the virtual boundaries of your garden via the app.

Reliable in Weak-Signal Areas

Designed for areas with trees, walls, and tight corners. LiDAR technology ensures precise navigation and reliable performance even in the most challenging areas.

Smart Edge Trimming

LiDAR and vision work together to support cleaner edge cutting and reduce the effort required for boundary setup.





FR4000 Robotic Mower

FV2000 Robotic Mower

FL3000 LiDAR Robotic Mower

Mowing Capacity

| | | | |
|-------------------------|-------------------------------|---------------------------------|----------------------------------|
| Recommended Mowing Area | 4,000 m ² (1 acre) | 2,000 m ² (0.5 acre) | 3,000 m ² (0.75 acre) |
| Max Climbing Ability | 33° (65%) | 33° (65%) | 33° (65%) |
| Max Mowing Slope | 25° (47%) | 25° (47%) | 25° (47%) |

Complete Unit

| | | | |
|------------|---|---|---|
| Technology | RTK + RGB Vision | RTK + RGB Vision | LiDAR + RGB Vision |
| Weight | 13.3 kg (29 lb) | 13.2 kg (29 lb) | 13.5 kg (30 lb) |
| Dimensions | 645 × 444 × 420 mm (25.4 × 17.5 × 16.5 in.) | 634 × 444 × 285 mm (24.9 × 17.5 × 11.2 in.) | 633 × 443 × 302 mm (24.9 × 17.4 × 11.8 in.) |
| Camera | Binocular | Monocular | Monocular |
| IP Rating | Mower: IPX5; Charging Station: IP65 | Mower: IPX5; Charging Station: IP65 | Mower: IPX5; Charging Station: IP65 |

Cutting System

| | | | |
|----------------|--|------------------------|--|
| Cutting Height | 20–60 mm (0.8–2.4 in.); 10–50 mm (0.4–2 in.) | 20–60 mm (0.8–2.4 in.) | 20–60 mm (0.8–2.4 in.); 10–50 mm (0.4–2 in.) |
| Cutting Width | 260 mm (10.2 in.) | 260 mm (10.2 in.) | 260 mm (10.2 in.) |

Battery & Charging

| | | | |
|--------------------|---------|---------|---------|
| Battery Capacity | 190 Wh | 95 Wh | 190 Wh |
| Runtime per Charge | 180 min | 120 min | 180 min |
| Charging Time | 120 min | 60 min | 120 min |



Robotic Mower Solutions



FJD Professional
Golf Course Robotic Solution



FJD Professional
Sports Field Robotic Solution

FJD Professional

Golf Course Robotic Solution

1

Positioning



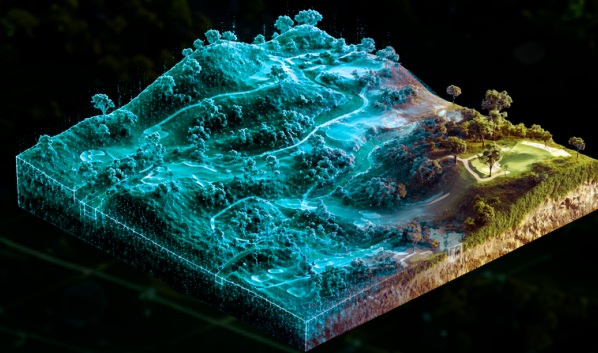
FJD Trion N10 CORS System

- Centimeter-level accuracy
- Stable signal coverage
- All-weather reliability



2

Mapping



FJD Trion P2 LiDAR Scanner

- High-density point cloud
- 360° LiDAR coverage
- Real-time data capture



3

Mowing



FJD Mowing Solution

- Reliable in weak-signal areas
- Smart path planning
- Multi-zone management



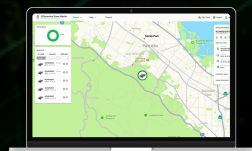
4

Data Management



FJD GolfMind Platform

- Digital twin visualization
- Task scheduling & monitoring
- Data-driven course maintenance decisions



Product Application Map

Fairways

RCM01 Robotic Cylinder Mower

Premium robotic mower delivering tournament-quality cuts for fairways.

Titan Robotic Mower

The most cost-effective robotic mower for pristine fairways.

MS200 Pro Mower Kit

Retrofit your existing mowers for autonomous operation.

Greens/Tees

GM22S Electric Walk Greens Mower

Ideal for greens requiring electric mowing.

Golf Driving Ranges

RM21 + Ball Picker Kit

Autonomous ball collection robot for golf driving ranges.



Roughs

RM21 Multi-Functional Robotic Mower

RM21 + Dew Brush Kit

Versatile mower for large rough areas, with reliable operation under trees.

FRX Robotic Mower

Cost-effective rough mower with 30° slope capability for steep terrain.

Titan Robotic Mower

Ideal for rough areas requiring low-noise operation.

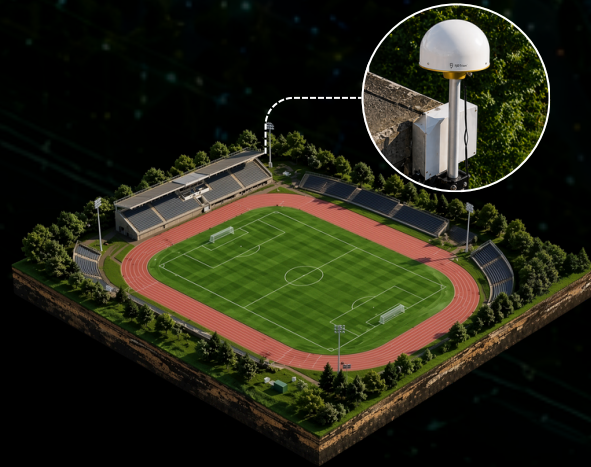
| | RM21 | RCM01 | Titan | FRX | GM22S |
|-------------------------------------|------------------------|-------------------------|---|--|--|
| Positioning & Perception | RTK + LiDAR + Vision | RTK + LiDAR + Vision | RTK + LiDAR + Vision | RTK + Vision | / |
| Cutting Height | 20–127 mm (0.8–5 in.) | 7–44 mm (0.28–1.73 in.) | 10–100 mm (0.4–4 in.) | 10–100 mm (0.4–4 in.) | 2–20 3–25 5–25 mm (0.08–0.8 0.12–0.98 0.2–0.98 in.) |
| Cutting Width | 635 mm (25 in.) | 685 mm (27 in.) | 730 mm (28.7 in.) | 520 mm (20.5 in.) | 559 mm (22 in.) |
| Mowing Slope | 15° | 15° | 25° | 30° | / |
| Mowing Time per Charge | Up to 5h | Up to 10h | Up to 8h | Up to 5.3h | Up to 6h |
| 24 h Coverage (Acres) | Up to 9 (Auto-Docking) | Up to 12 (Battery Swap) | Up to 10.4 (Battery Swap) Up to 9 (Auto-Docking) | Up to 8 (Battery Swap) Up to 5 (Auto-Docking) | Up to 1.4 (Single Charge) |

FJD Professional

Sports Field Robotic Solution

1

Positioning



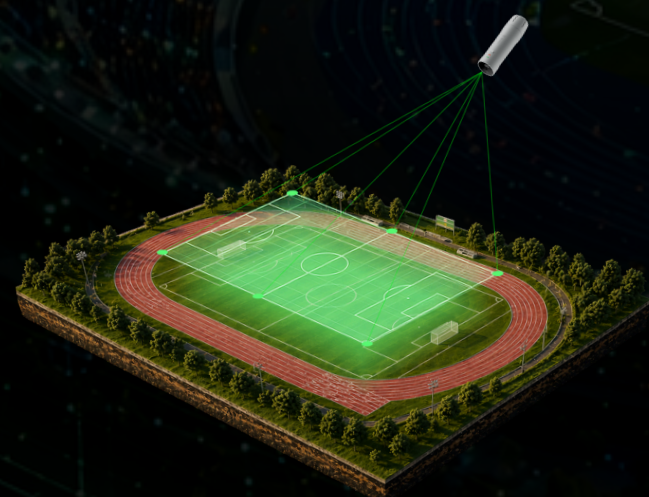
FJD Trion N10 CORS System

- Centimeter-level accuracy
- Stable signal coverage
- All-weather reliability



2

Mapping



FJD Trion V4e Pro

- Centimeter-level RTK positioning
- Lightweight handheld mapping
- Real-time field preview



3

Mowing & Line Marking



FJD Robotic Mower & Line Marker

- Autonomous operation
- Smart path planning
- Precision mowing & marking



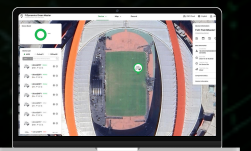
4

Data Management



FJD GreenMaster Platform

- Digital twin visualization
- Task scheduling & monitoring
- Virtual path preview before marking



Product Application Map

Mowing System

FRX Robotic Mower

Designed for routine mowing on professional sports fields, with strong slope handling and cost-effective autonomous operation.

Titan Robotic Mower

Built for large sports fields that require high daily mowing capacity. When paired with the line marker kit, Titan also supports precise and efficient line marking.

RM21 + Line Marker Kit Combo

An integrated robotic solution for mowing and line marking across large, multi-field sports venues.

Line Marking System

PaintMaster Pro

Designed for professional events and routine field maintenance, with precise, efficient, and repeatable template-based marking.

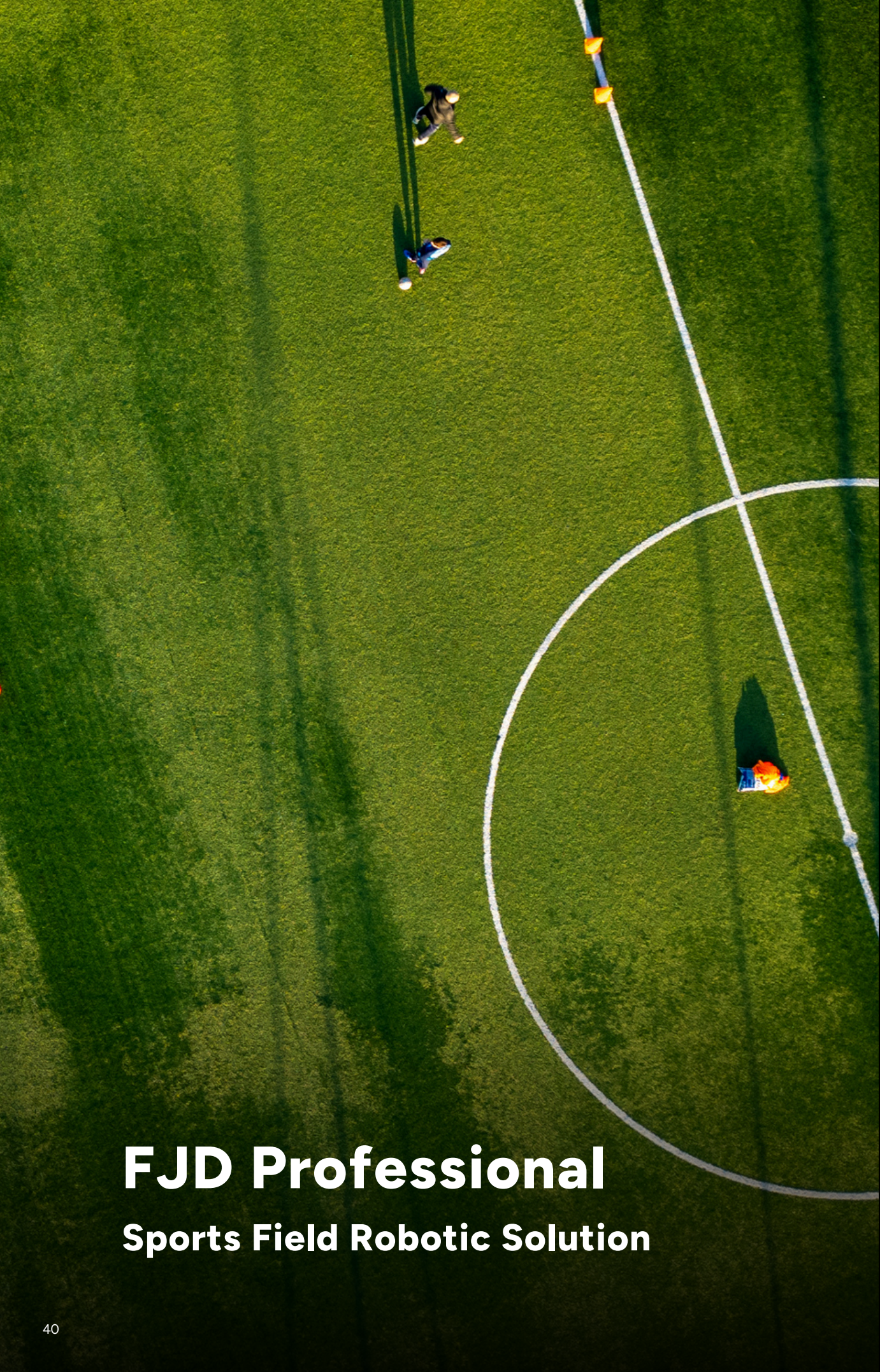
PaintMaster Mini

Suitable for schools, clubs, and small to medium-sized venues, offering lightweight handling and everyday efficiency.

PaintMaster Ultra

Designed for premium venues that require high-precision line marking where RTK signals are limited or unavailable.

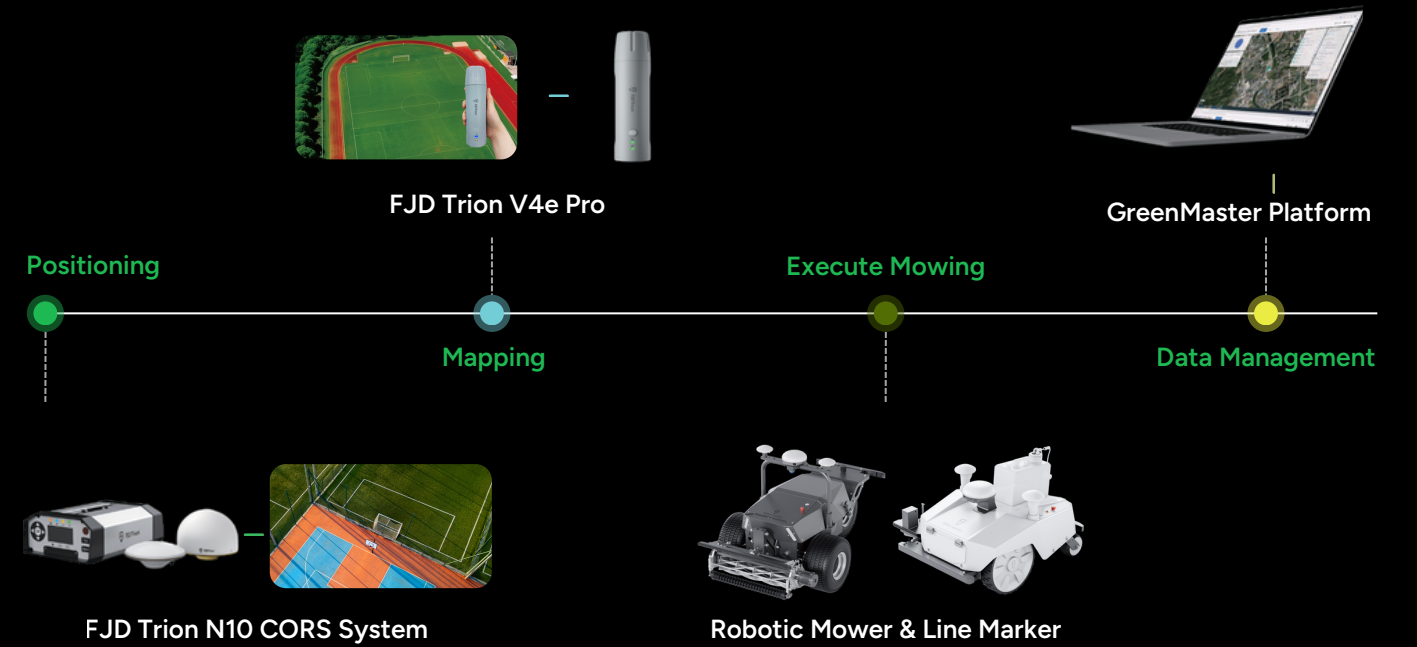
| Cutting System | FRX | Titan | RM21 | Line Marking System | LM01 | PaintMaster Pro | PaintMaster Mini | PaintMaster Ultra |
|--------------------------|------------------------------------|-------------------------------------|-------------------------------------|---------------------------|---------------------|-----------------------|----------------------|-----------------------|
| Positioning & Perception | RTK + Vision | RTK + LiDAR + Vision | RTK + LiDAR + Vision | Max Marking Speed | 3 km/h (1.9 mph) | 3 km/h (1.9 mph) | 2 km/h (1.2 mph) | 3 km/h (1.9 mph) |
| Max Coverage in 72h | 96,000 m ² (23.7 acres) | 108,000 m ² (26.7 acres) | 108,000 m ² (26.7 acres) | Line Width Range | 5–17 cm (2–6.7 in.) | 6–17 cm (2.4–6.7 in.) | 5–12 cm (2–4.7 in.) | 6–17 cm (2.4–6.7 in.) |
| Cutting Height | 10–100 mm (0.4–4 in.) | 10–100 mm (0.4–4 in.) | 20–127 mm (0.8–5 in.) | Nozzle Height | 5–17 cm (2–6.7 in.) | 3–11 cm (1.2–4.3 in.) | 3–8 cm (1.2–3.1 in.) | 3–11 cm (1.2–4.3 in.) |
| Cutting Width | 520 mm (20.5 in.) | 730 mm (28.7 in.) | 635 mm (25 in.) | Paint Tank Capacity | 25 L (6.6 gal) | 20 L (5.28 gal) | 8 L (2.11 gal) | 25 L (6.6 gal) |
| Mowing Time per Charge | 5.3h | 8h | 5h | Operating Time per Charge | 20h | 5h | 1.5h | 8h |



FJD Professional

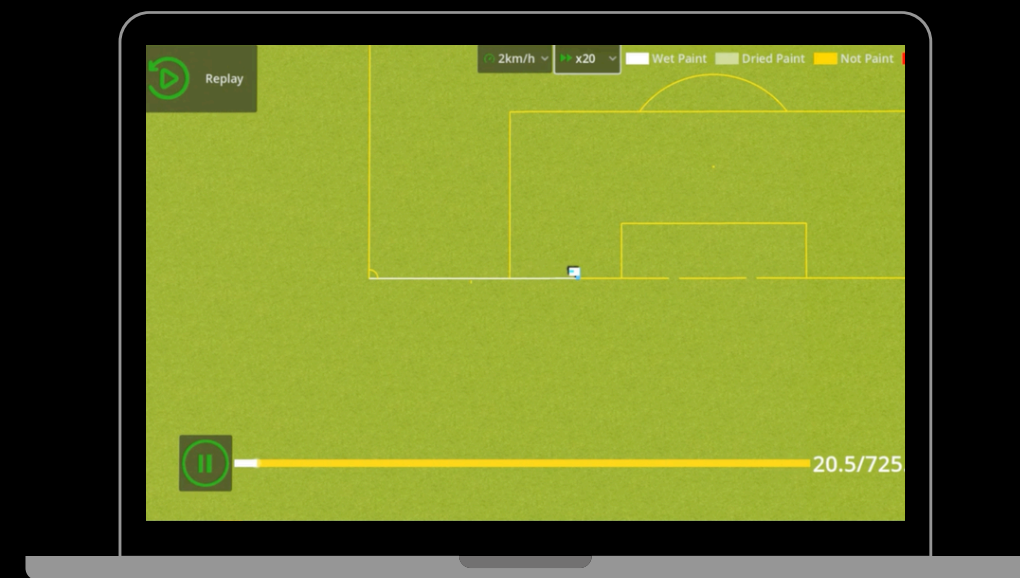
Sports Field Robotic Solution

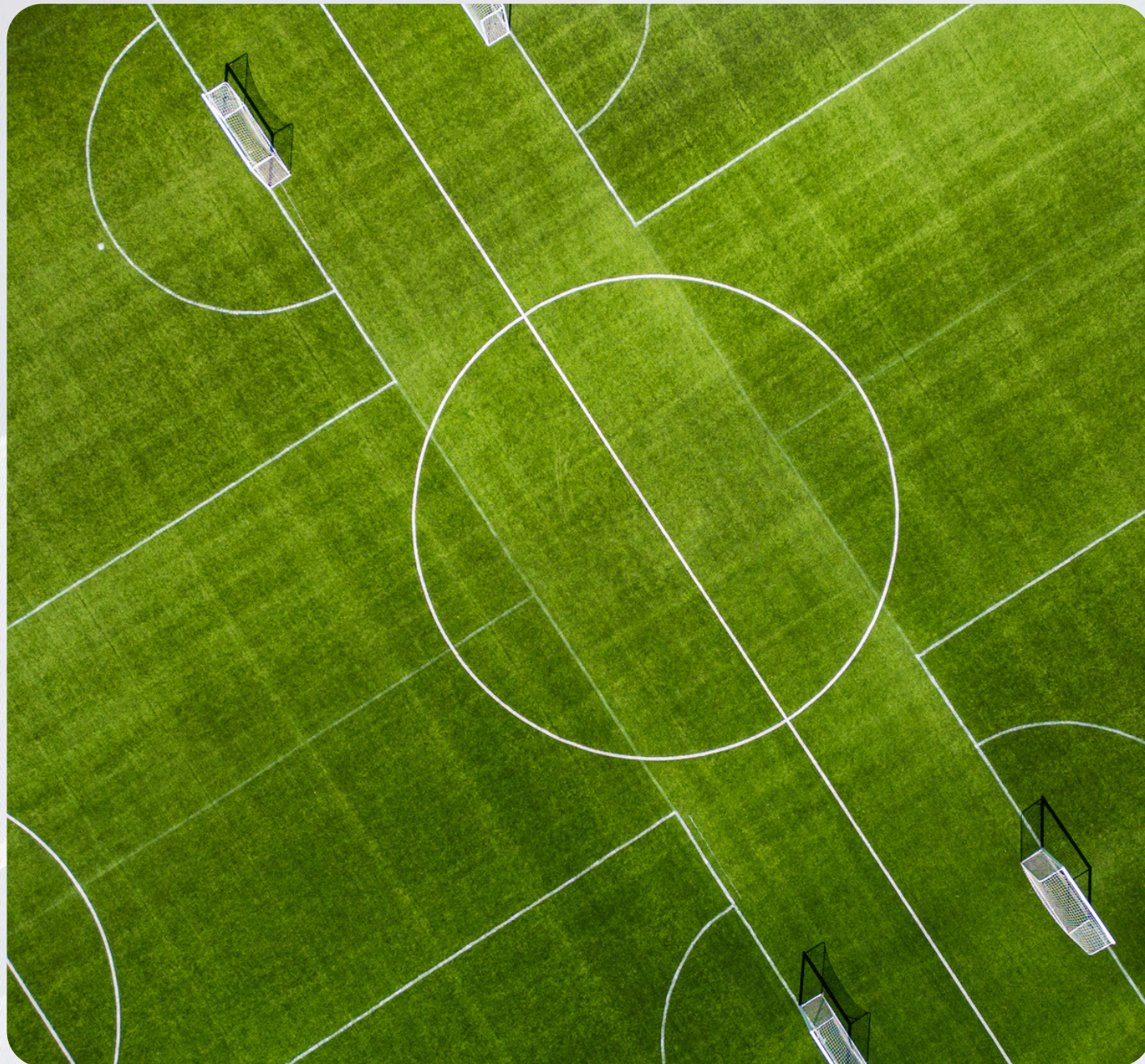
Sports Field Digital Twin Solution



FJD PaintMaster Simulator

With the FJD PaintMaster Simulator, users can preview marking paths virtually before starting the task, helping reduce setup errors and save time. For both beginners and experienced operators, the simulator makes the marking workflow easier to understand, plan, and execute with greater accuracy.





Cutting System



FRX Robotic Mower

Suitable for routine mowing on professional sports fields, with strong value, slope adaptability, and continuous unmanned operation.



Titan Robotic Mower

Built for large sports fields with high-output daily maintenance, and delivers precise, efficient line marking when paired with the line marker kit.



RM21 Multi-Functional Robotic Mower

Serves as a multifunctional platform for daily turf maintenance and supports additional field care tasks through expandable kits.

Marking System



PaintMaster Pro

Suitable for high-standard professional events and high-frequency maintenance scenarios, with precision, efficiency, and template-based repeatability.



PaintMaster Mini

Suitable for schools, clubs, and small to medium-sized venues, with lightweight handling, convenience, and everyday efficiency.



PaintMaster Ultra

Suitable for premium event venues and high-precision line marking needs in RTK-challenged environments.

| Cutting System | FRX | Titan | RM21 |
|--------------------------|------------------------------------|-------------------------------------|-------------------------------------|
| Positioning & Perception | RTK+Vision | RTK+LiDAR+Vision | RTK+LiDAR+Vision |
| Max Coverage in 72h | 96,000 m ² (23.7 acres) | 108,000 m ² (26.7 acres) | 108,000 m ² (26.7 acres) |
| Cutting height | 10–100 mm (0.4–4 in.) | 10–100 mm (0.4–4 in.) | 0–127 mm (0.8–5 in.) |
| Cutting width | 520 mm (20.5 in.) | 730 mm (28.7 in.) | 635 mm (25 in.) |
| Mowing time per charge | 5.3h | 8h | 5h |

| Line Marking System | LM01 | PaintMaster Pro | PaintMaster Mini | PaintMaster Ultra |
|---------------------------|---------------------|------------------------|----------------------|------------------------|
| Max Marking Speed | 3km/h (1.9 mph) | 3 km/h (1.9 mph) | 2 km/h (1.2 mph) | 3 km/h (1.9 mph) |
| Line Width Range | 5–17 cm (2–6.7 in.) | 6–17 cm (2.4–6.7 in.) | 5–12 cm (2–4.7 in.) | 6–17 cm (2.4–6.7 in.) |
| Nozzle height | 5–17 cm (2–6.7 in.) | 3–11 cm (1.2–4.3 in.) | 3–8 cm (1.2–3.1 in.) | 3–11 cm (1.2–4.3 in.) |
| Tank Capacity | 25 L (6.6 gal) | 20 L (5.28 gal) | 8 L (2.11 gal) | 25 L (6.6 gal) |
| Operating Time per Charge | 20h | 5h | 1.5h | 8h |

FJD Professional Golf Course Robotic Solution

Smart Turf Management for Golf Courses

FJD is redefining golf course maintenance with a full lineup of intelligent robotic mowers designed for every turf zone.



No Signal Worries

RTK combined with LiDAR or Vision ensures reliable performance even under trees.



Scan Once. Automate It All

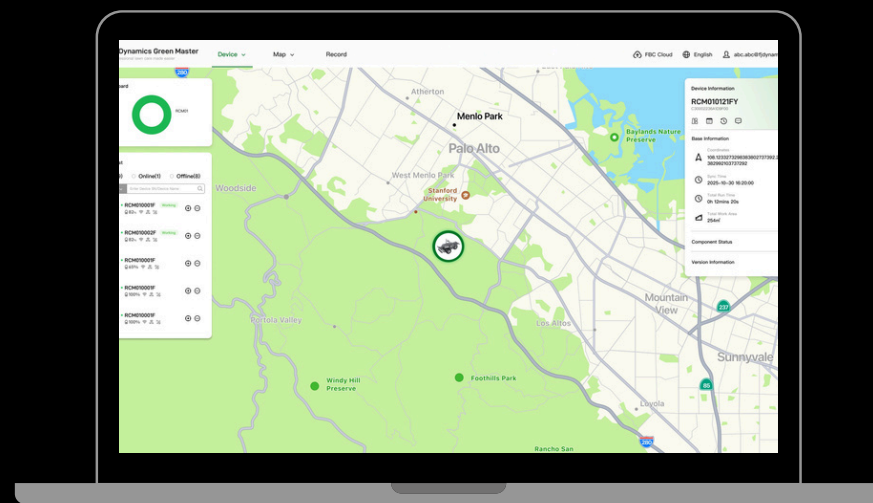
Map in minutes with the FJD Trion P2 LiDAR Scanner. Create a digital asset shared across your entire fleet.



Multi-Zone Management

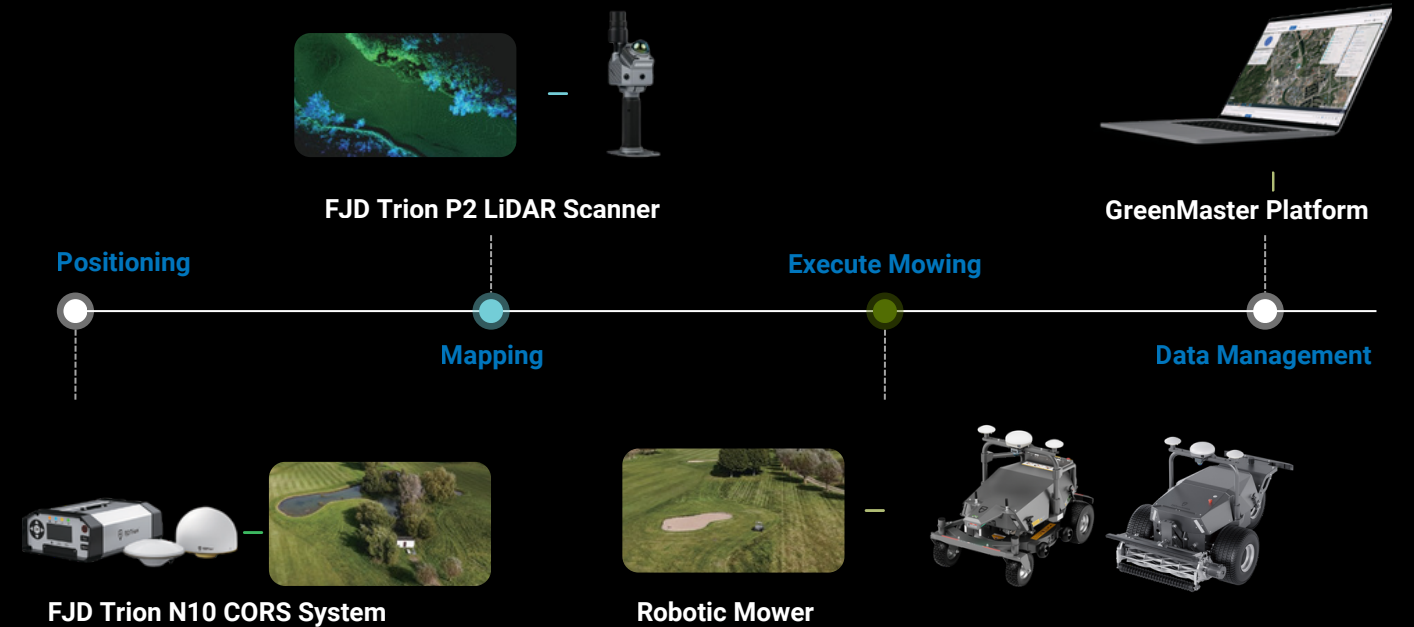
Automated multi-field mowing with seamless transitions between task areas.

GreenMaster Platform Integration



Boundary Definition Task Scheduling Digital Operations

Golf Course Digital Twin Solution





Golf Driving Ranges



RM21 + Ball Picker Kit

Autonomous ball collection robot for golf driving ranges.

Roughs



RM21 Multi-Functional Robotic Mower

Versatile mower for large rough areas, with reliable operation under trees.



RM21 + Dew Brush Kit



FRX Robotic Mower

Cost-effective mower for rough maintenance, built to handle slopes up to 30°.



Titan Robotic Mower

Ideal for rough areas requiring low-noise operation.

Fairways



RCM01 Robotic Cylinder Mower

Premium robotic mower delivering tournament-quality cuts for fairways.



Titan Robotic Mower

The most cost-effective robotic mower for pristine fairways.



MS200 Pro Mower Kit

Retrofit your existing mower into an autonomous solution.

Greens/Tees



GM22S Electric Walk Greens Mower

Ideal for greens and tees requiring low-noise electric mowing.

| | RM21 | RCM01 | Titan | FRX | GM22S |
|-------------------------------------|------------------------|-------------------------|---|--|--|
| Positioning & Perception | RTK+LiDAR+Vision | RTK+LiDAR+Vision | RTK+LiDAR+Vision | RTK+Vision | / |
| Cutting height | 20–127 mm (0.8–5 in.) | 7–44 mm (0.28–1.73 in.) | 10–100 mm (0.4–4 in.) | 10–100 mm (0.4–4 in.) | 2–20 3–25 5–25 mm (0.08–0.8 0.12–0.98 0.2–0.98 in.) |
| Cutting width | 635 mm (25 in.) | 685 mm (27 in.) | 730 mm (28.74 in.) | 520 mm (20.5 in.) | 559 mm (22 in.) |
| Mowing Slope | 15° | 15° | 25° | 30° | / |
| Mowing time per charge | Up to 5h | Up to 10h | Up to 8h | Up to 5.3h | Up to 6h |
| 24 hr Coverage (Acres) | Up to 9 (Auto-Docking) | Up to 12 (Battery Swap) | Up to 10.4 (Battery Swap) Up to 9 (Auto-Docking) | Up to 8 (Battery Swap) Up to 5 (Auto-Docking) | Up to 1.4 (Single Charge) |

RM21 + LM01 Line Marker Kit

- One-Tap Autonomous Operation
- Seamless Line Marking Resume
- Less Input, Greater Output

Reduce paint usage by 50%
 Cut labor costs by up to 90%
 Mark up to 20 full-size fields per charge



RM21 + BP01 Ball Picker Kit

- Full-Basket Detection & Auto-Return
- Cloud Scheduling for Full-Course Coverage
- Cut Manual Work Across the Range



RM21 + GC01 Grass Collector Kit

- Automated Grass Collection & Disposal
- Debris Collection on Artificial Turf
- Professional Turf Striping



RM21 + DB01 Dew Brush Kit

- Automatic Lifting and Folding
- Customizable Brushing Direction
- Dew Brushing for Consistent Ball Roll



LM01 Specifications

| | |
|-----------------------------|---|
| Weight | 68 kg (150 lb) |
| Dimensions | 684 × 562 × 432 mm (27 × 22.1 × 17 in.) |
| Max marking speed | 3 km/h (1.9 mph) |
| Paint tank capacity | 25 L (5.5 gal) |
| Line width range | 50–170 mm (2–6.7 in.) |
| Nozzle height | 30–80 mm (1.2–3.1 in.) |
| Max marking time per charge | 20 h |
| IP rating | IPX4 |
| Operating temperature | 5–35°C |

BP01 Specifications

| | |
|---------------------|---|
| Weight | 70 kg (154 lb) |
| Dimensions | 1480 × 1120 × 590 mm (58.3 × 44.1 × 23.2 in.) |
| Picking width | 900 mm (35.4 in.) |
| Basket count | 2 |
| Capacity per basket | 400 golf balls |



GC01 Specifications

| | |
|-------------------------|--|
| Weight | 100 kg (220 lb) |
| Dimensions | 1260 × 960 × 740 mm (49.6 × 37.8 × 29.1 in.) |
| Grass collection height | 20–50 mm (0.8–2 in.) |
| Collection width | 800 mm (31.5 in.) |
| Max travel speed | 3 km/h (1.9 mph) |
| Max collection volume | 150 L (33 gal) |
| Max climbing ability | 8° |
| IP rating | IPX4 |
| Operating temperature | 0–45°C |

DB01 Specifications

| | |
|-------------------------|---------------------|
| Weight | 28 kg (61.7 lb) |
| Length – Single section | 1000 mm / 39.4 in. |
| Length – Three sections | 2930 mm / 115.4 in. |
| Brush lift | Supported |
| Brush folding | Supported |



INEEDROBOT



ineedrobot@roboti-adria.eu

www.ineedrobot.eu

Dunajska cesta 158, 1000 Ljubljana, Slovenia